



# Pathology

## Human & non Human



Test your samples  
Have your data

MILAN – OXFORD – SAN DIEGO

HQ Via Apelle, 41 – 20128 – Italy

RO Via Ranzato, 12 – 20128 – Italy

W [labospace.com](http://labospace.com) @ [info@labospace.com](mailto:info@labospace.com)

T +39 02 35980841 F +39 02.2572231

PI IT 07312350965, REA Milano 1951817 del 16/02/2011

Dear Value Customer,

thank you for the interest in our Pathology Service. Below you will find the list of the service available as standard and the full instructions and the general overview on how your assay will be managed.

Our expertise:

### **Histology**

- Sectioning
- Standard H&E Staining
- Special Staining

### **Immunohistochemistry IHC**

- Staining
- Multiplex staining
- Reading and Reporting

### **In Situ Hybridization**

- FISH
- CISH
- RNA ISH

### **Other Services**

- Setup of Histologic Score
- Setup of Special Stainings
- Setup of Primary Antibody

### **Scanning**

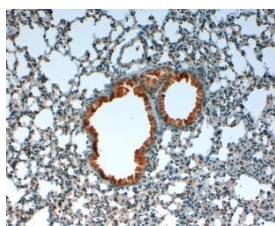
### **Consultancy**

- Histology second opinion case
- Pathologist General Consultancy

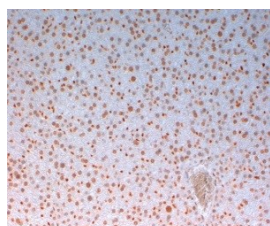
[info@labospace.com](mailto:info@labospace.com)

## How we will handle your service:

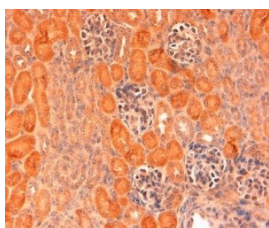
Order Confirmation	As soon as your order is confirmed LaboSpace will send you a code specific for your project in the format <b>SHCxxx</b> . You will be able to communicate with us using this code until we deliver your data.
Shipping Samples	Before shipping samples fill and send the form to <a href="mailto:info@labospace.com">info@labospace.com</a> and we will schedule the pick up and the logistic. Important: Please also include all the forms together with the samples in your shipment.
Samples Receipt	As soon as we receive the samples we will check them and issue a confirmation of acceptance.
Data Delivery	The final data generated will be send together with the <b>User Report Service Guide</b> and the related comments. Customized Report on request.



IL1 beta, lung tissue with no inflammatory or neoplastic event: strong and diffuse immunostaining in the cytoplasm of bronchial epithelium. The immunohistochemical reaction has no background.



AKT3 immunohistochemistry: diffuse and strong immunostaining in liver tissue. AKT3 expression is found in the nuclei of hepatocytes and Kupffer cells. No background is observed



DELTA1 immunohistochemistry: multifocal Delta1 expression in the cytoplasm of some renal tubular cells. Kidney of 8-days old mouse. A weak background staining is found in renal tubules and glomeruli.

[info@labospace.com](mailto:info@labospace.com)