




PATHOLOGY

HISTOLOGY IMMUNOHISTOCHEMISTRY FISH

CLICK HERE TO...

VISIT THE LAB 



*“Our promise is to exceed our **customers’ expectations** providing innovative Testing services.”*

PATHOLOGY

HISTOPATHOLOGY &
HISTOLOGY

Pharma Academy **Biotech**

Our scientists team is **highly qualified** to perform Histopathology and Histology testing on Human and Mouse specimens FFPE and frozen tissues. Tissue repository available.

We process, section, and stain specimens according to your specifications.

Our **full-service histology laboratories and hubs** strategically positioned in Europe takes available both the infrastructure and the scientific expertise to readily meet the evolving needs of our clients Standard and proprietary validated protocols are **ISO 9001:2018 regulated and approved**.

PATHOLOGY

HISTOPATHOLOGY

Labospace allows a cost effective, fast and quality regulated approach to your Histology - IHC - IF FISH Biomarker analysis project.

HISTOLOGY

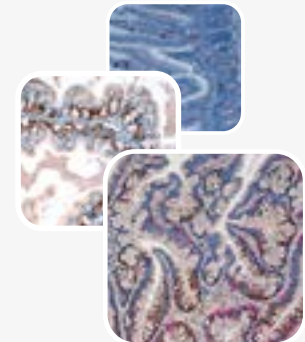
- Sectioning, trimming, embedding
- Standard H&E staining
- Reading and reporting
- Setup of histologic score
- Pathologist general consultancy
- Histology second opinion case
- Special Staining
- Slide Scanning

IHC

- IHC Staining
- IHC Multiplex
- Antibody validation
- Antibody IHC validation for IVD
- Setup of primary antibody
- Setup of score
- Pathologist general consultancy
- Slide scanning

FISH

- Staining



Click here to...
**VISIT OUR
GALLERY**

PATHOLOGY

HOW IT WORKS

• **CONTACT** us and tell your needs to find a collaborative and consultative approach to your projects.

• **PROPOSAL** project layout strategies, recommendations, reagents suggestions.

• **S.O.W.** designed to meet your expectations.

• **SAMPLE MANAGEMENT**

Testing schedule
Samples collection and preparation
Full logistic support

• **ASSAY LAYOUT**

preparation data in templates and format agreed in the SOW.





CLICK HERE TO...

CONTACT US



CLICK HERE TO DOWNLOAD...

ISO 9001:2015



CLICK HERE TO VISIT...

IHC GALLERY



CLICK HERE TO...

VISIT THE LAB



Labospace S.r.l

VIA APELLE, 41 20128 MILANO, ITALY | ☎ +39 02 35980841 | 📠 +39 02 37908004 | info@labospace.com | www.labospace.com

IMPORTS AND DISTRIBUTES MEDICAL DEVICES AND DIAGNOSTIC SOLUTIONS AND IS ACCREDITED **ISO 9001:2015** | **ISO 13485:2016**.