

NEW
PRODUCT!



OLIG2

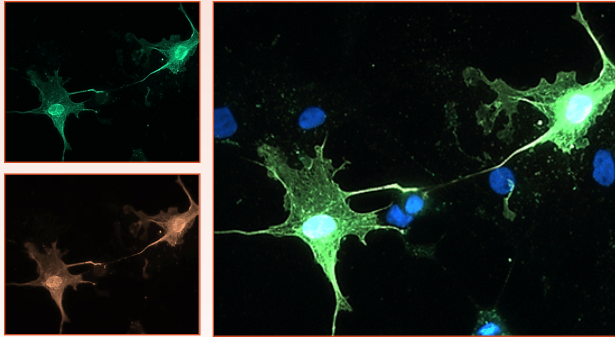
SKU: OLIG2

Clonality: Chicken Polyclonal

Validated Applications: IHC, ICC, WB

Target Protein: Olig2

Species Reactivity: Human, Mouse, and Rat



Immunofluorescence of COS-7 cells expressing OLIG2-flag (green) and rabbit anti-flag antibody (red). Blue is DAPI nuclear stain showing nuclei of both transfected and untransfected cells. Staining shows 100% correspondence between chicken anti-OLIG2 signal and anti-flag in transfected cells.



ALPHA-SYNUCLEIN

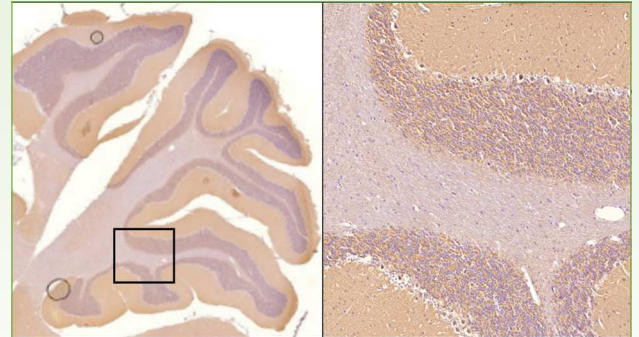
SKUs: 77-520 (clone 6113-10), 77-521 (clone 6113-62)

Clonality: Mouse monoclonal

Validated Applications: IHC, ICC, WB

Target Protein: Alpha-synuclein

Species Reactivity: Human, Mouse, and Rat



Sagittal section of formalin fixed, paraffin-embedded rat brain showing strong staining of alpha synuclein within the molecular layer of the cerebellum. Sections were stained with anti-alpha synuclein (clone 6113-62) antibody at 1:5,000.

Placing your order with **Aves Labs** or **Antibodies Inc** is fast and easy.

Order online: aveslabs.com or antibodiesinc.com • Call toll-free: (800) 824.8540 • Fax: (530) 758.6307

Made in the USA

NEW
PRODUCT!