

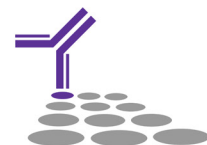
Anti-Llama Secondary Antibodies



**Secondary Antibodies that are
Second to None**

SouthernBiotech

www.SouthernBiotech.com info@SouthernBiotech.com



Anti-Llama Secondary Antibodies

Camelids produce conventional immunoglobulins (Igs) consisting of two heavy and two light chains as well as IgG heavy chain only antibodies (HcAbs) that have a simpler structure. The antigen binding domain of each HcAb heavy chain, known as the VHH region, has a molecular weight of just 15 kDa and can be produced recombinantly to provide several important advantages for scientific research. Critically, due to their small size, VHH antibodies can more easily penetrate cells and tissue samples during applications such as intracellular flow cytometry and immunohistochemistry (IHC). VHH antibodies also have high solubility and thermostability and are more amenable to engineering than conventional immunoglobulins. SouthernBiotech offers a comprehensive selection of anti-llama secondary antibodies for detecting the various Ig heavy chain classes and IgG subclasses as well as IgG(H+L) and VHH. These include both monoclonal and polyclonal secondaries, produced in mouse and goat, all of which are extensively characterized and available in multiple formats.

Description	Clone	Cat. No.	Qty
Mouse Anti-Llama IgG1-UNLB	SB182L	5870-01L	1.0 mg
		5870-01M	0.5 mg
		5870-01S	0.1 mg
		5870-04	1.0 mL
Mouse Anti-Llama IgG1-AP	SB182L	5870-05	1.0 mL
Mouse Anti-Llama IgG1-HRP		5870-08	0.5 mg
Mouse Anti-Llama IgG1-BIOT			
Mouse Anti-Llama IgG2/IgG3-UNLB	SB183e	5880-01L	1.0 mg
		5880-01M	0.5 mg
		5880-01S	0.1 mg
		5880-04	1.0 mL
		5880-05	1.0 mL
		5880-08	0.5 mg
Mouse Anti-Llama IgG2/IgG3-AP	SB183e		
Mouse Anti-Llama IgG2/IgG3-HRP			
Mouse Anti-Llama IgG2/IgG3-BIOT			

Description	Clone	Cat. No.	Qty
Mouse Anti-Llama IgM-UNLB	SB189b	5820-01L	1.0 mg
		5820-01M	0.5 mg
		5820-01S	0.1 mg
		5820-04	1.0 mL
Mouse Anti-Llama IgM-AP	SB189b	5820-05	1.0 mL
Mouse Anti-Llama IgM-HRP		5820-08	0.5 mg
Mouse Anti-Llama IgM-BIOT			
Goat Anti-Llama IgG(H+L)-UNLB	Polyclonal	6045-01	1.0 mg
		6045-02	1.0 mg
		6045-04	1.0 mL
		6045-05	1.0 mL
		6045-08	1.0 mg
		6045-30	1.0 mg
		6045-31	1.0 mg
Goat Anti-Llama IgG(H+L)-FITC	Polyclonal		
Goat Anti-Llama IgG(H+L)-AP			
Goat Anti-Llama IgG(H+L)-HRP			
Goat Anti-Llama IgG(H+L)-BIOT	Polyclonal		
Goat Anti-Llama IgG(H+L)-AF488			
Goat Anti-Llama IgG(H+L)-AF647			

Corporate Offices

160 Oxmoor Blvd
Birmingham, AL 35209
USA

Mailing Address

PO Box 26221
Birmingham, AL 35260
USA

Tel 205.945.1774

Fax 205.945.8768

Email info@SouthernBiotech.com

Technical Support technical@SouthernBiotech.com

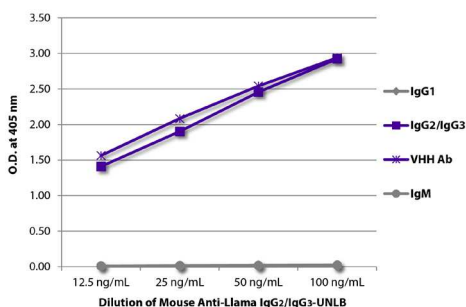
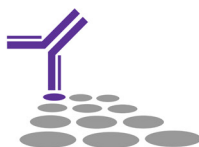
Website www.SouthernBiotech.com

SouthernBiotech is ISO 9001:2015 Certified

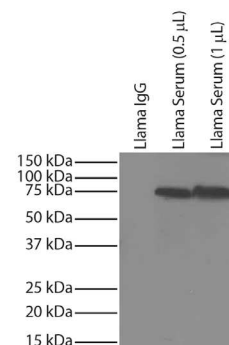
SouthernBiotech

www.SouthernBiotech.com

info@SouthernBiotech.com



ELISA plate was coated with purified llama IgG1, IgG2/IgG3, IgM, and a VHH antibody. Immunoglobulins were detected with Mouse Anti-Llama IgG2/IgG3-UNLB (SB Cat. No. 5880-01L) followed by Goat Anti-Mouse IgG2b, Human ads-HRP (SB Cat. No. 1090-05).



Llama IgG and llama serum was resolved by electrophoresis, transferred to PVDF membrane, and probed with Mouse Anti-Llama IgM-UNLB (SB Cat. No. 5820-01L) followed by Goat Anti-Mouse IgG2b, Human ads-HRP (SB Cat. No. 1090-05) and chemiluminescent detection.